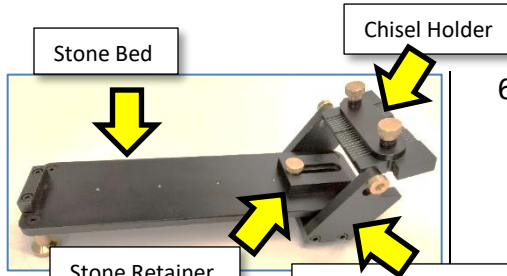
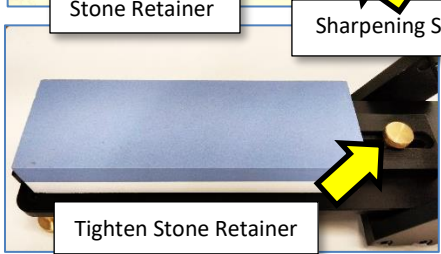


The #11910 EZ Glide Sharpening Sled is a precision sharpening and honing guide for chisels and plate irons. Easy to set up, fast and accurate! The steps below are to familiarize yourself with the sled!

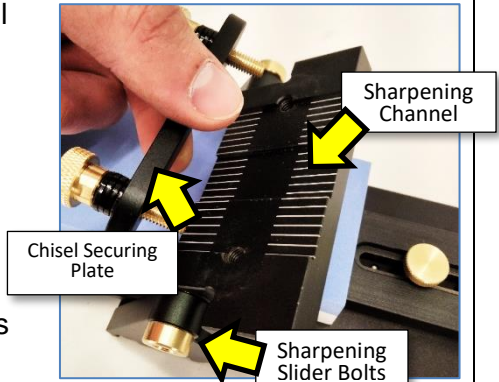
1. Overview and getting familiar



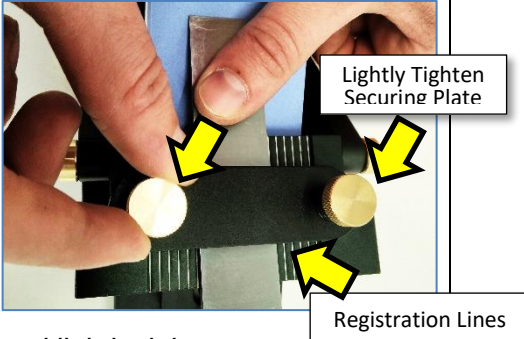
2. Securing the waterstone by aligning your sharpening stone with the front foot and rear stone retainer. Tighten the brass retaining bolt.



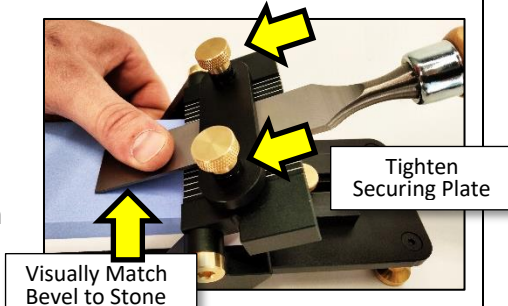
3. Insert the chisel into the Sharpening Slider. Loosen the chisel securing plate bolts and Sharpening Slider side bolts (Allen Key!).



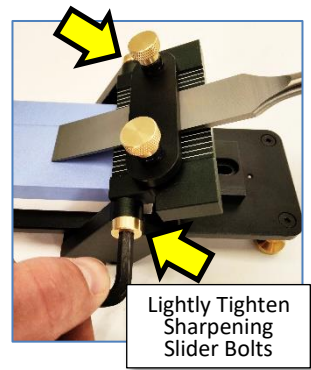
4. Place your chisel, bevel side down into Sharpening Slider. Ensure the chisel is straight and aligned with the white registration lines and lightly tighten.



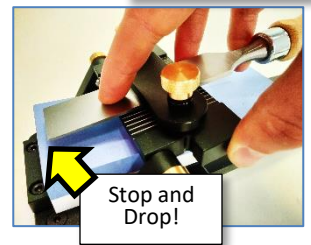
5. Adjust the length of the chisel to visually match the existing bevel angle on the chisel and tighten.



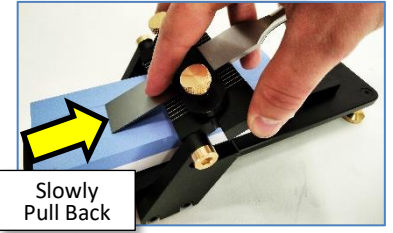
6. Lightly tighten the Sharpening Slider side bolts with the Allen Key so that the chisel plate can lift for the sharpening strokes.



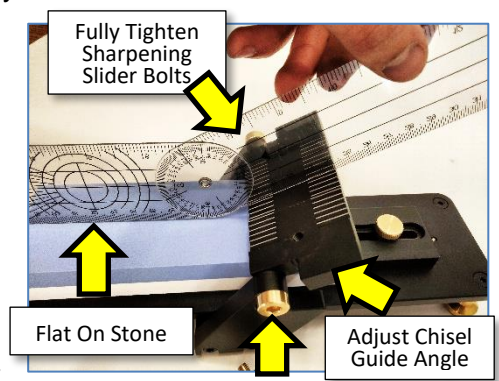
7. Gently lift the Chisel Guide and slide the Sharpening Slider forward on the stone and drop onto the stone.



8. Slowly pull the Sharpening Slider toward the back of the sled with gentle pressure. Repeat this as many times as necessary!



9. If you wish to set the angle precisely with an angle gauge (EZGauge provided!). You will first



remove the chisel securing plate and loosen the Sharpening Slider Bolts (Step 3 picture).

Then rest the angle gauge along the stone and adjust the Chisel Guide to the desired angle.

Then, fully tighten the Sharpening Slider Bolts, as the Chisel Guide must remain in a fixed angle and position as you sharpen!